

## Installation Manual Mostec Programming Adapter M2428 Data Interface

### System requirements

Windows 95/98/NT4.0/2000/XP/Vista/7/10® Operating System  
Unused USB Port

### Non-liability

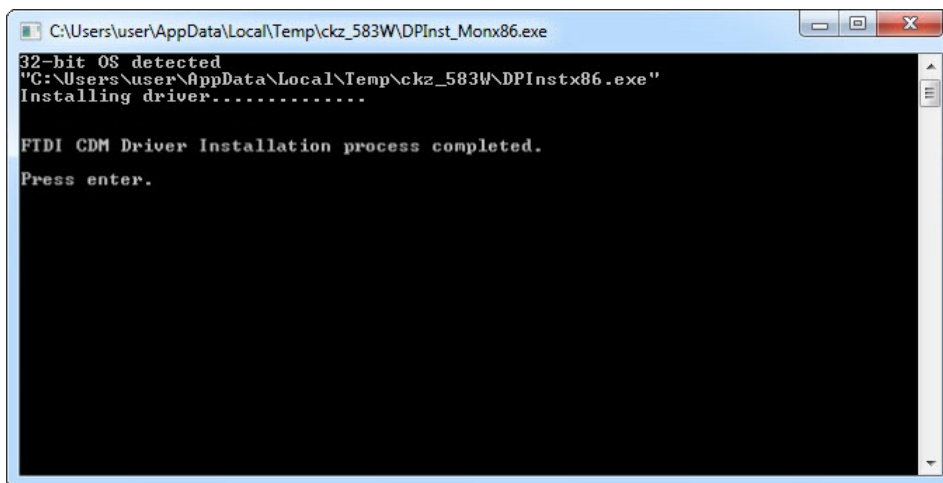
The company Mostec AG developed and tested the software Mpro with largest care. Mostec is not responsible for any damages whatsoever, including loss of information, interruption of business, personal injury and/or any damage or consequential damage without limitation, incurred before, during or after the use of our products.

### General references

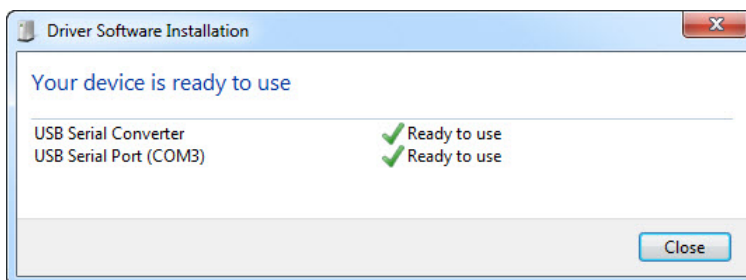
Close all open programs, before beginning the installation. For installation under Windows NT/2000/XP/Vista/7/10®, administrator rights are necessary. The newest software may be downloaded free of charge at [www.mostec.ch](http://www.mostec.ch). Mostec also supplies the program on CD-ROM.

### Mostec Programmier Adapter Installation

1. Do not connect the USB programming adapter!
2. USB Treiber Installation  
Start the file setupUSBdriver.exe from CD-ROM.  
The newest software may be downloaded any time and free of charge at [www.mostec.ch](http://www.mostec.ch).  
→ The driver files will be installed automatically to your Windows Operating System.



3. Connect the USB programming adapter to an unused USB port.  
→ Windows Operating System detects now the new hardware automatically.

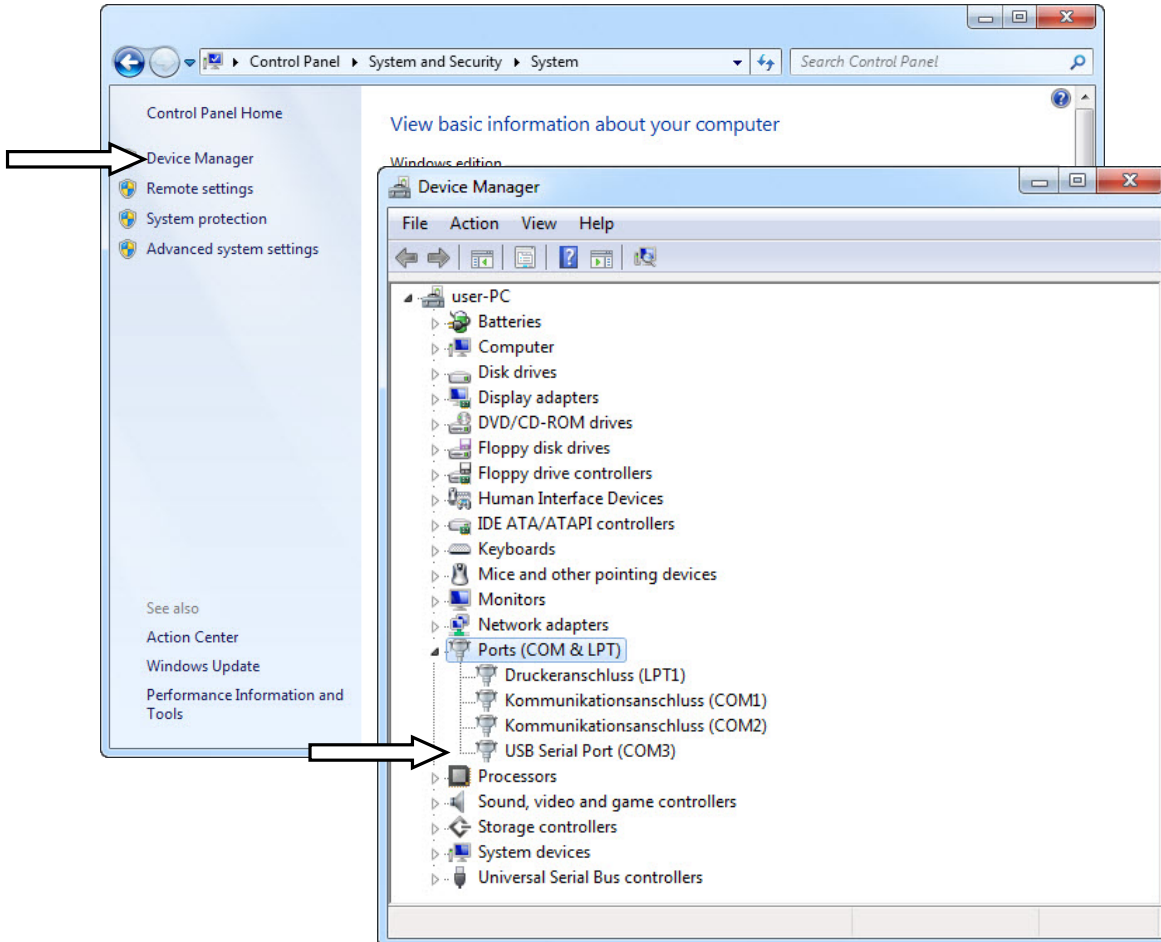


## Installation Manual Mostec Programming Adapter M2428 Data Interface

#### 4. Check the newly installed USB Port

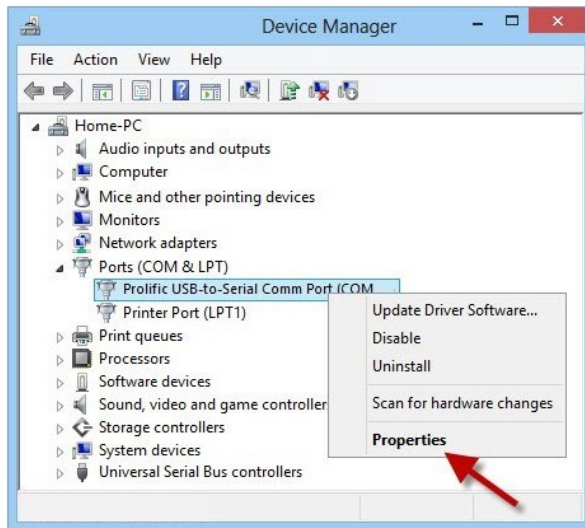
Under "Start → Control Panel → System and Security → System → Device Manager" or Windows 10 right click the windows symbol in the lower left corner and select Device Manager or Use the short cut **Windows Key + break** to launch the device manager.

Now device manager shows the installed COM-Port under "Ports". The COM-Port number must be set in the Mpro software(\*). Check "Installation manual Mpro" for more information.

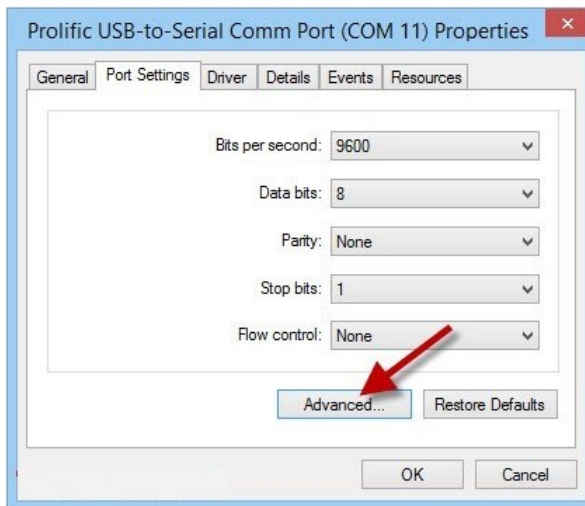


(\* ) Note: Mostec MPro needs a COM port number below 16. If the operating system has assigned a port above 16, you need to change the port number manually. This is done as described on the next page:

Right click on the COM Port you want to change



Under the tab "Port Settings" click Advanced



Use "COM Port Number" to change to a port number lower than 16 and confirm with "OK"

