

Platform Scale Type M2428-09

50 to 200kg

4...20mA, 2-Wire Technics

24VDC Power Supply

Programmable

Tare function

IP67



E.g. M2428-09, 0...200kg
370x370x60mm

Technical description

The platform scale M2428-09 is used in content measuring for liquid gas bottles to monitor the remaining gas.

The parallel bending beam consists of a strain gage sensor with integrated electronics to convert the weight to a 4...20mA signal.

There is no need to use external, sensitive strain gage amplifiers or signal conditioning devices.

The cell connects directly to any 2-wire sensor input of process control computers or other control equipment and displays. The bending beam confirms to class IP67 and is delivered with open cable ends.

Any range within the measuring range can be programmed.

E.g. 50kg to 200kg = 4 to 20mA within a calibrated range of 0 to 200kg.

NEW: It's possible to tare the platform scale in the range of 0...30% of full weight from outside with a simple permanent magnet.

Technical Data:

Characteristics :

- Low profile
- Integrated, programmable cable amplifier
- Standard signal output 4...20mA for any range
- 2-Wire-technics, supply 24VDC
- Direct interface to process control computers
- Resolution of 4096 digits for the range
- Protection class IP67
- 25kg to 300kg, all in-between values adjustable
- Customer tailored cable length

Components:

Aluminium anodized

Measuring range:

Customer specified, 25kg to 200kg

Signal output:

4...20mA for any given range

Overload

min. 1.5 x load without damage, breaking load 3 x range

Measuring principle:

Metallic strain gage, full bridge

Zero point:

<0.08% @ 25°C

Zero stability:

<0.008% per °C

Accuracy:

<0.08% @ 25°C

Stability:

<0.0024% per °C

Creep after 30':

<0.5%

Reproducibility:

<0.1%

Linearity:

<0.05%

Rise time:

<50ms for 99% load change

Hysteresis:

<0.3%

Max. load, 24V:

<500Ω

Max. supply:

<35VDC

Min. supply:

>22VDC

Connection:

Cable ends: red = +24VDC, black = 4...20mA and shield

Insulation resistance:

>5000MΩ @ 50VDC

Operating temperature:

-10 to 40°C

Max. working temperature:

-25 to 65°C

Storage temperature:

-40 to 85°C

Cable length:

Standard = 5m, others on request

Max. cable length:

300m

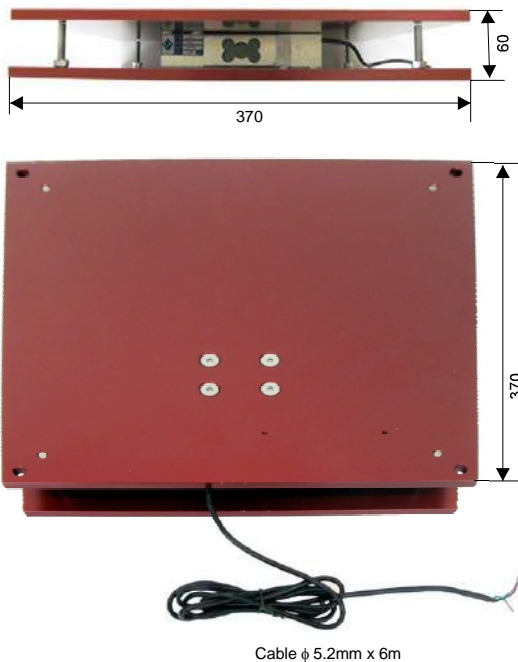
Ordering example:

M2428-09, 0...200kg = 4...20mA

Options:

On request

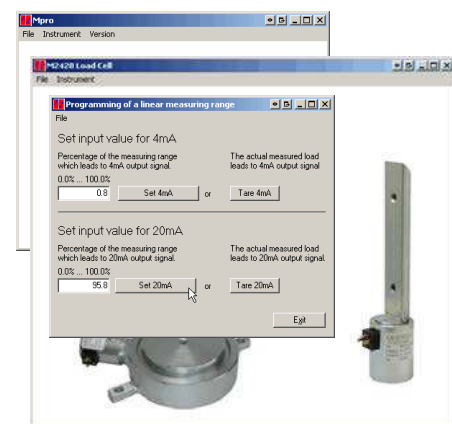
Dimensions in mm:



Programming:



Programming with laptop and M2428 interface



Programming software

MOSTEC

Mess- und Regeltechnik
Lausenerstrasse 13a
CH-4410 Liestal
Switzerland
Tel. +41 61 921 40 90
Fax +41 61 921 40 83