

Conductivity Cell Type M8836S-0.01



Technical description

The conductivity cell M8836S-01 is used for water, waste water and ultra pure water measurements in batch and continuous applications. They are used e.g. in chromatography, water purification fermentation and general chemical processes.

The accuracy is 2% in the temperature range of -30...130°C.

The cell constant K is 0.01 for the measuring range of 0...20µS.

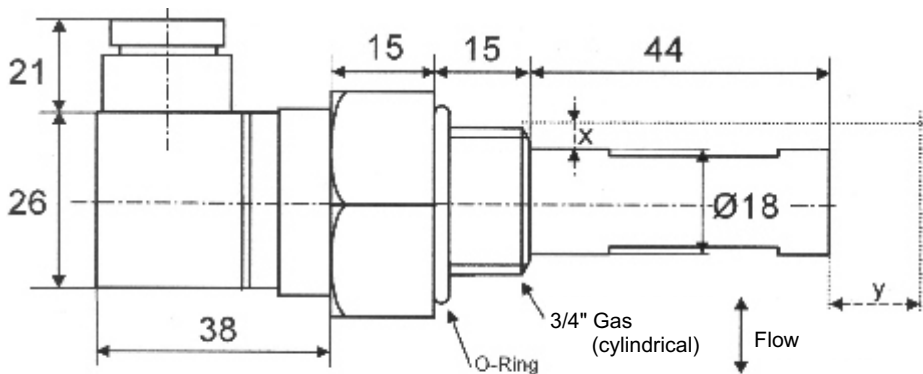
The insulating parts are made in stainless steel and leak proofing is guaranteed by chemically resistant O-ring seals.

A build in Pt-100 (RTD) temperature sensor enables automatic temperature compensation.

Technical Data

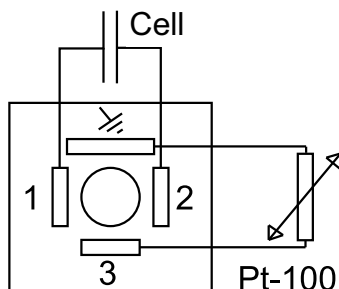
Range:	0...20 μ S
Cell constant:	K=0.01
Accuracy:	\pm 2%
Temperature range:	-30...130°C
Internal temperature sensor:	Pt-100, 2-wire
Time constant temperature sensor:	60 sec
Electrode holder:	stainless steel
Electrode body:	Cr-Ni-Mo-alloy, quality 1.4435
Thread:	3/4" cylindrical gas, with O-ring
Wrench dimension:	36mm
Max. pressure:	15 bar
Probe diameter:	18mm
Probe depth:	44mm
Connector:	DIN 40050, IP67, cable connector included
Max. cable outside diameter:	7.5mm, use shielded cable only
Options:	- other temperature sensor

Cell dimensions (mm):

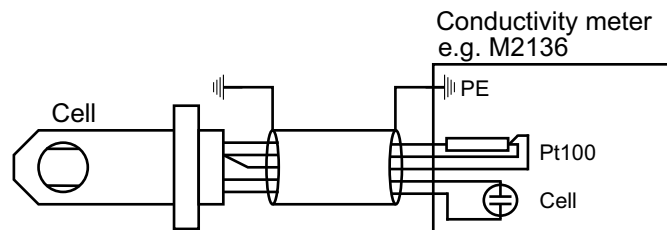


x = min. distance to pipe 3mm
y = min. distance to pipe
metal pipe (conductive) y = min. 12mm
plastic pipe (isolated) y = min. 5mm

Wireing:



Cell connecting diagram:



MOSTEC

Mess- und Regeltechnik
Lausenerstrasse 13a
CH-4410 Liestal
Switzerland
Tel. +41 61 921 40 90
Fax +41 61 921 40 83